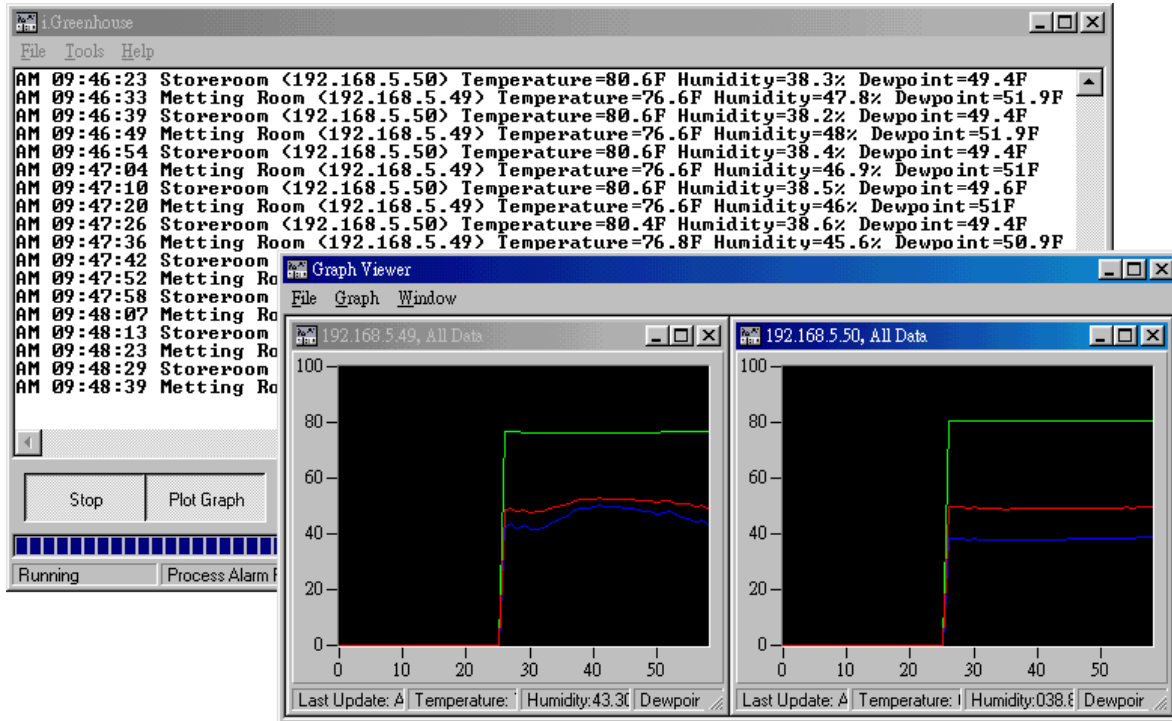


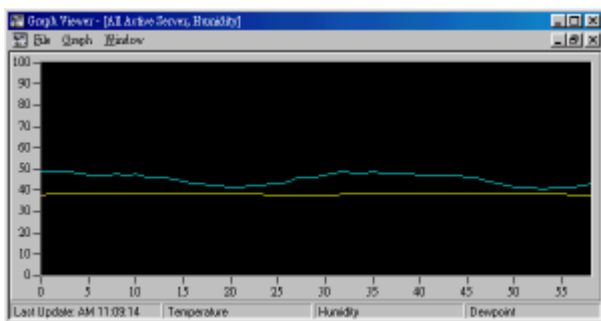
i.Greenhouse

Temperature / Humidity

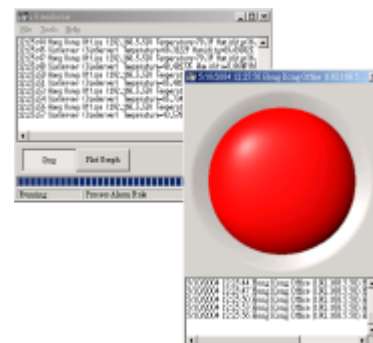
Remote Monitor Client



Monitor Different Location Temperature / Humidity
 Plot Graph up to 30 Temperature Logger
 Customizable Real Time Graph
 Customizable Alarm Rule and Process Function
 Data Receive Log

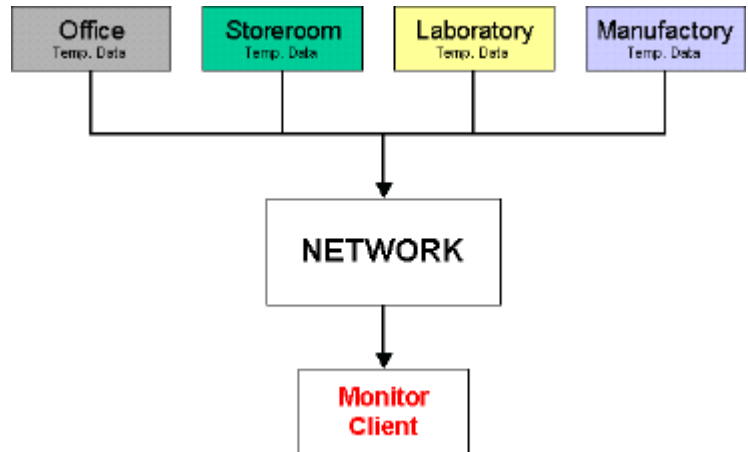
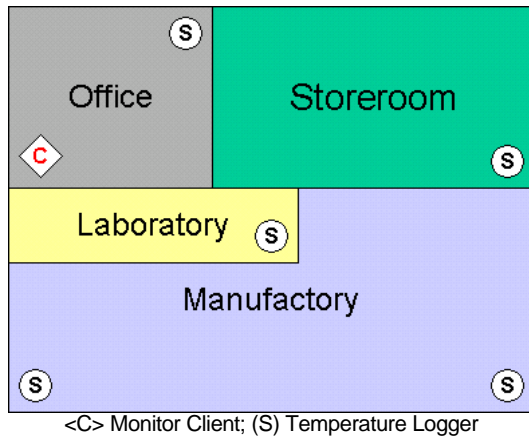


Graph View in All Logger Humidity (Multi Data)



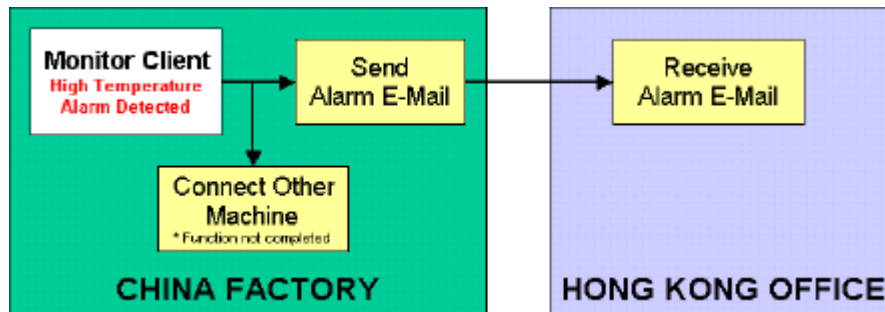
Popup Alarm Window

Function Overview



Install Temperature Logger in office any place, get the Real Time Temperature form your computer

Easy Install; Monitor All Temperature through Office Network



Receive Alarm Mail at any place; Send a signal to Other Device

System Request

- Intel Pentium 1000MHz CPU or compatible
- 256MB RAM
- 200MB Hard Disk free space
- CD-ROM / DVD-ROM Request
- 10/100Mbps Ethernet Adapter
- Microsoft Windows 98 / 2000 Professional
- Internet Service*
- SMTP Mail Service**

* Special function need connect through Internet (Internet Service charge and pents not included)

** Alarm Rule - Send Alarm E-Mail Function through SMTP Mail Server (SMTP Mail Server Service charge or SMTP Mail Program not included)

For detail please visit to <http://www.eastco-hk.com>

EASTCO LIMITED 儀高儀器有限公司			
	HONG KONG HEAD OFFICE: NO.11 20/F., WING FUNG IND. BLDG., 40 - 50 SHA TSUI ROAD, TSUEN WAN N.T., HONG KONG TEL: (852) 2456 1823, 2456 1842 FAX: (852) 8148 6856 E-MAIL: info@eastco-hk.com	SHENZHEN OFFICE: 8/F, BLDG. 616, 1st BAGUA ROAD, FUTIAN DISTRICT, SHENZHEN, CHINA POSTAL CODE: 518029 TEL: (86-755) 8226 7541 FAX: (86-755) 8241 3857 E-MAIL: shenzhen@eastco-hk.com	SHANGHAI OFFICE: ROOM 1810, 701 HUTAI ROAD, SHANGHAI, CHINA POSTAL CODE: 200072 TEL: (86-21) 5653 6311 FAX: (86-21) 5653 6309 E-MAIL: shanghai@eastco-hk.com