



Best Selection of X-Ray System For Advanced PCB Fabrication

X-eye 1000A

- Provide Function of Screen Split (4 Windows)
- possible to inspect 4 places at same time
- Provide Image Measuring Functions
- Largest Work Table Size (1100mm×800 mm)
- Possible to Customize system based on know-how of automatic machine developer



※ We are willing to test your samples free, if you want to test your samples.

X-eye 1000A

Best Selection of X-Ray System
For Advanced PCB Fabrication

Advantages

- Applicable Thickness : 2-5mm
- Precision measuring and inspection assistant
- Screen split/capture capability (Four windows)
- Real-time image improvement capability
- Pseudo 3D Display, Coloring
- Visual error messaging

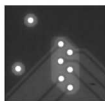
Defects Detected

- PCB MLB
- Small hole drilling
- Hole-pad alignment
- Presence and degree of innerlayer shift
- SMT
- Short
- Solder ball
- Misalignment

Applications

- MLB
- BGA
- SMT

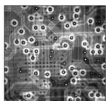
Sample Image



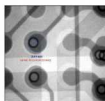
▲ Small hole drilling



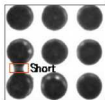
▲ Small hole drilling



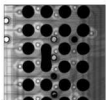
▲ Innerlayer



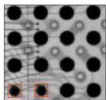
▲ Innerlayer



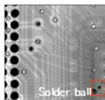
▲ Short



▲ Short



▲ Insufficient solder



▲ Solder ball

Specifications

X-ray Tube	Focus size	33 μ m	10 μ m	10 μ m
	Tube voltage	Max. 50kV	Max. 60kV	Max. 80kV
	Tube current	Max. 1mA		
	Max. power	50W		
	Geometric enlargement ratio	-		
TV System	Enlargement ratio on the monitor	-		
	Aging(Preheating)	Sensor		
	Image Intensifier	8.8 mm x 6.4 mm		
Personal Computer	Monitor size	15 inch(LCD)		
	CPU	Intel Pentium IV Process		
	OS	Windows 2000		
	Printer	Color Printer		
X-ray Shield box and others	Dimensions and weight	1100(W) x 800(D) x 1470(H), 250kg		
	Externally leaking dose	1 μ Sv / H or Less		
	Power supply	AC220V \pm 10%, 50/60Hz		

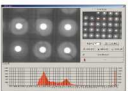
Program Image



▲ Main



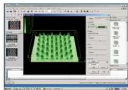
▲ Four windows



▲ Histogram



▲ I/O



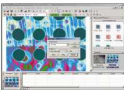
▲ Pseudo 3D



▲ Excel Data



▲ Measuring



▲ Pseudo Coloring

Website : www.eastco-hk.com

EASTCO LIMITED

儀 高 儀 器 有 限 公 司



香港總公司
香港新界荃灣沙咀道26-38號
風力工業中心2樓26室
Tel : (852)2456 1823
Fax: (852) 2469 1787
E-mail: info@eastco-hk.com
網絡實名: 儀高儀器

中國公司
儀高南儀器(深圳)有限公司
中國深圳市八卦四路萊泰克大廈
3樓V區 郵編: 518029
Tel : (86-755) 8241 3890
Fax: (86-755) 8241 3857
E-mail: shenzhen@eastco-hk.com

上海辦事處
中國上海市滬太路701號
18樓1810室
郵編: 200072
Tel : (86-21) 5653 6311
Fax: (86-21) 5653 6309
E-mail: shanghai@eastco-hk.com