



## Table Top X-Ray Inspection Machine

# X-eye 3000A

- Table Top Super Performance (Focus : 5 $\mu$ m)
- Highest Magnification Ratio (Basic 30 times, Optional 150 times)
- 5 Axis Control (X, Y, Z, Option : Rotation & Tilt)
- Flat Panel Detector (Option)
- Automatic Calculation Function (Void, Solder Ball)
- Perfect Safety Design (Triple Safety Design)
- External Leaking Dose (0.5  $\mu$ Sv/h or less)



→ We are willing to test your samples free, if you want to test your samples.

# X-eye 3000A Super Performance Table Top X-Ray Inspection Machine

## Specifications

	Specification	Option	
X-ray Tube	Focus size	5 $\mu$ m	
	Tube voltage	Max. 60kV	
	Tube current	Max. 250 $\mu$ A	
	Max. power	10W	
TV System	Geometric enlargement ratio	2x to 20x	Zoom System x10, x5
	Aging(Preheating)	Automatic	
	Image Intensifier	6 inch	Flat Panel Detector
Personal Computer	Monitor size	17 inch(CRT)	
	CPU	Intel Pentium IV Process	
	OS	Windows 2000	
X-ray Shield box and others	Printer	Color Printer	
	Dimensions and weight	650(W) x 650(D) x 850(H), 150kg	
	Externally leaking dose	0.5 uSv / H or Less	
	Power supply	AC220V $\pm$ 10%, 50/60Hz	

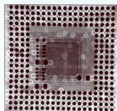
## Defect Detected

- Short / Bridge
- Void / Crack
- Insufficient Solder
- Misalignment
- Missing
- Solder Ball
- Deformity

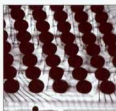
## Application

- PCB / SMT
- BGA, CSP, Flip Chip, etc.
- Battery for Mobile Phone
- Plastic Mold
- Electrical Component

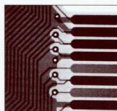
## Sample Image



▲ BGA



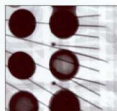
▲ BGA Rotation



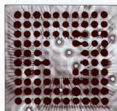
▲ PCB



▲ Wire Bonding Rotation



▲ BGA Void



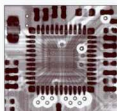
▲ Insufficient Solder



▲ CSP Short



▲ BGA (FPD Image)



▲ IC (FPD Image)



▲ Test Pin

Website : [www.eastco-hk.com](http://www.eastco-hk.com)

EASTCO LIMITED

儀 高 儀 器 有 限 公 司



香港總公司  
香港新界荃灣沙咀道26-38號  
國江工業中心2樓26室  
Tel : (852) 2456 1823  
Fax: (852) 2469 1767  
E-mail: [info@eastco-hk.com](mailto:info@eastco-hk.com)  
網絡實名: 儀高南儀器

中國公司  
儀高南儀器(深圳)有限公司  
中國深圳市八卦四路紫雲大廈  
3樓302室 郵政: 518029  
Tel : (86-755) 8241 3890  
Fax: (86-755) 8241 3857  
E-mail: [shenzhen@eastco-hk.com](mailto:shenzhen@eastco-hk.com)

上海辦事處  
中國上海市滬太路701號  
18樓1810室  
郵政: 200072  
Tel : (86-21) 5653 6311  
Fax: (86-21) 5653 6309  
E-mail: [shanghai@eastco-hk.com](mailto:shanghai@eastco-hk.com)