



Table Top X-Ray Inspection Machine

X-eye 3000B

- Best Application for Inspection of Electrical Component, BGA and CSP
- High Resolution X-Ray Inspection Machine (Focus : 33 μ m)
- Mini-Size Machine (Size : 740mm X 825mm X 660mm)
- Provide Measuring Function
- Automatic Calculation Function (Void, Solder Ball)
- Perfect Safety Design (Triple Safety Design)
- External Leaking Dose (0.5 uSv/h or less)



→ We are willing to test your samples free, if you want to test your samples.

X-eye 3000B

Table Top X-Ray Inspection Machine
for Electrical Component.

Specifications

		Specification	Option
X-ray Tube	Focus size	33 μ m	
	Tube voltage	Max. 50kV	60kV, 80kV
	Tube current	Max. 1mA	
	Max. power	50W	
	Geometric enlargement ratio	30x	
TV System	Aging(Preheating)	Automatic	
	X-Ray Camera	8.8mm \times 6.6mm	
Personal Computer	Monitor size	17 inch(CRT)	
	CPU	Intel Pentium IV Process	
	OS	Windows 2000	
	Printer	Color Printer	
X-ray Shield box and others	Dimensions and weight	740(W) \times 825(D) \times 660(H)	
	Working Table Size	330mm \times 250mm	
	Externally leaking dose	0.5 μ Sv / H or Less	
	Power supply	AC220V \pm 10%, 50/60Hz	

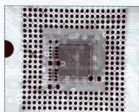
Defect Detected

- Insufficient Solder
- Void / Crack
- Short / Bridge
- Misalignment
- Missing
- Solder Ball
- Deformity

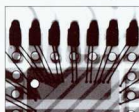
Application

- Electrical Component
- PCB / SMT
- BGA, CSP, Flip Chip, etc.
- Battery for Mobile Phone
- Plastic Mold

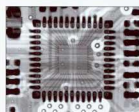
Sample Image



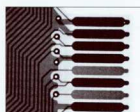
▲ BGA



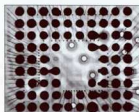
▲ Wire Bonding



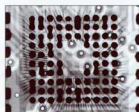
▲ IC



▲ PCB



▲ Insufficient Solder



▲ CSP Short



▲ Solder Ball



▲ CSP

Website : www.eastco-hk.com

EASTCO LIMITED

儀 高 儀 器 有 限 公 司



香港總公司
香港新界葵青沙咀道26-38號
匯力工業中心2樓26室
Tel : (852)2456 1823
Fax: (852) 2469 1767
E-mail: info@eastco-hk.com
網絡實名: 儀高南儀器

中國公司
儀高南儀器(深圳)有限公司
中國深圳市八卦四路泰克大廈
3樓V區 郵編: 518029
Tel : (86-755) 8241 3890
Fax: (86-755) 8241 3857
E-mail: shenzhen@eastco-hk.com

上海辦事處
中國上海市灘太路701號
18樓1810室
郵編: 200072
Tel : (86-21) 5653 6311
Fax: (86-21) 5653 6309
E-mail: shanghai@eastco-hk.com