



High Performance X-Ray Inspection Machine

X-eye 5000B

- Best Optimized for SMT/Electrical component
(Focus : 5 μ m, Voltage : 90Kv)
- Largest Table Size (460mm x 340mm)
- High Magnification (Ratio : 340 times)
- High Speed, High Efficiency Inspection by Auto Teaching Function & Grid Teaching Function
- Perfect Safety Design (Triple Safety Design)



→ We are willing to test your samples free, if you want to test your samples.

X-eye 5000B High Resolution X-Ray System

Specifications

	Specification	
X-ray Tube	Focus size	5 μ m
	Tube voltage	Max. 90kV
	Tube current	Max. 250 μ A
	Max. power	10W
	Magnification ratio	2X to 340X
TV System	Aging(Preheating)	Automatic
	Image Intensifier	2 inch / 4 inch
	Monitor size	17 inch(XVGA/LCD)
Personal Computer	CPU	Intel Pentium IV Process
	OS	Windows 2000
	Printer	Color Printer
	Dimensions and weight	1175(W) × 1370(D) × 1900(H), 600kg
X-ray Shield box and others	Externally leaking dose	0.5 uSv / h or Less
	Power supply	AC220V \pm 10%, 50/60Hz

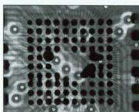
Defect Detected

- Insufficient Solder
- Void / Crack
- Bridge / Short
- Deformity
- Misalignment
- Missing
- Solder Ball

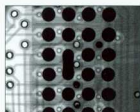
Application

- PCBA
- BGA, CSP, Flip Chip etc.
- Battery for Mobile Phone
- Automobile Part
- Die casting
- Plastic Mold
- Electrical Component

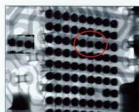
Sample Image



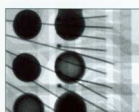
▲ Short



▲ Short



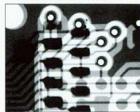
▲ Cold Solder



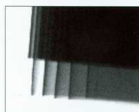
▲ Void



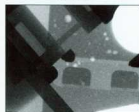
▲ Solder Ball



▲ CSP



▲ Battery for Mobile phone



▲ Mg Die casting

Website : www.eastco-hk.com

EASTCO LIMITED

儀 高 儀 器 有 限 公 司



香港總公司
香港新界荃灣沙咀道26-38號
匯力工業中心2樓205室
Tel : (852)2456 1823
Fax: (852) 2469 1767
E-mail: info@eastco-hk.com
網絡實名: 儀高南儀器

中國公司
儀高南儀器(深圳)有限公司
中國深圳市八卦四路泰來大廈
3層308室
Tel: (86-755) 8241 3890
Fax: (86-755) 8241 3857
E-mail: shenzhen@eastco-hk.com

上海辦事處
中國上海市銀太路701號
18樓1810室
郵編: 200072
Tel: (86-21) 5653 6311
Fax: (86-21) 5653 6309
E-mail: shanghai@eastco-hk.com