



Highly Efficient X-Ray Test Equipment

# X-eye 7000

- X-ray test equipment for the test of auto parts, magnesium, die casts and cast molds (120Kv ~ 350Kv Selectable)
- Test functions with six axes (X1, X2, Y, Z, Tilt and Rotation)
- Image sizes and measures obtainable through basic measuring program
- High speed and highly efficient test functions (Auto-Teaching)
- Real-time image quality improving function
- Pseudo 3D display and coloring
- Know-how obtained through the 10-year experience makes OEM models



→ We are willing to test your samples free, if you want to test your samples.

# X-eye 7000 series

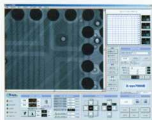
## Application Products and Inspection Items

- Defect Inspect inside of Automobile parts
- Die casting (Void, Crack)
- Mg, Al, Zn (Void, Crack)
- Automobile parts (Handle, Brake)
- Plastic Forming Products

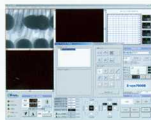
## Specifications

		120KVp	150KVp	160KVp
Tube	Tube type	closed type	closed type	closed type
	Tube voltage	120 KVp	150 KVp	160 KVp
	Tube current	2mA	3mA	16mA
	Max. power	240W	450W	640W
	Focus size	0.07 X 0.07mm	0.5X0.5mm	0.4X0.4mm
Manipulator	Axis		6	
	X1 axis		100mm	
	X2 axis		100mm	
	Y axis		600mm	
	Z axis		700mm	
	Rotation axis		n x 360°	
Robot Table	Tilt axis		±30°	
	Payload	Max. 50 kg (Jig or Chuck is included )		
Image Intensifier	Size	φ500 mm		
	Input diameter	4/6 inch		
X-ray Shield box and others	Dimensions	2000(W)x1700(D)x2050(H) mm		
	Weight	Approx. 1800kg		
	Externally Leaking dose	1uSv / h or Less		
	Power supply	AC220V ± 10%, 50/60Hz		

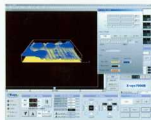
## Software



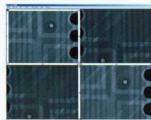
▲ Main Screen



▲ Measurement Screen



▲ Pseudo 3D



▲ 4Segment Screen

Website : [www.eastco-hk.com](http://www.eastco-hk.com)

EASTCO LIMITED

儀 高 儀 器 有 限 公 司



香港總公司  
香港新界元朗沙咀道26-38號  
匯力工業中心2樓26室  
Tel : (852) 2456 1823  
Fax : (852) 2469 1767  
E-mail: [info@eastco-hk.com](mailto:info@eastco-hk.com)  
網絡實名: 儀高南儀器

中國公司  
儀高南儀器(深圳)有限公司  
中國深圳市八卦四路索泰克大廈  
3樓V區 郵編: 518029  
Tel : (86-755) 8241 3890  
Fax: (86-755) 8241 3857  
E-mail: [shenzhen@eastco-hk.com](mailto:shenzhen@eastco-hk.com)

上海辦事處  
中國上海市滬太路701號  
18樓1810室  
郵編: 200072  
Tel : (86-21) 5653 6311  
Fax: (86-21) 5653 6309  
E-mail: [shanghai@eastco-hk.com](mailto:shanghai@eastco-hk.com)